



COFFEE MORNINGS

There is a warm welcome, coffee, tea and delicious home made scones and cakes for everyone at the weekly Coffee Mornings held in the Community Room Thursdays 10.00 to 12.00 Please come along and meet new/old friends.



QUIZ NIGHTS

The next ones will be 5th November and 3rd December. £5 to include home made supper (meat and vegetarian options) 7.30 for an 8pm start.

The bar will be open and supper will be served half way through the evening. You don't need a pre-arranged team – just come along.

Please note – there will be a limit of 30 participants and the bar will only take **CASH** Sign up and pay in the Shop, to book your place by **WEDNESDAY** of that week.

CRAFT, COFFEE, CHAT AND CAKE

9th November we will be making felt Christmas hanging decorations

or you can bring your own current project.

If you like crafting, knitting, sewing, drawing or painting and convivial company, then come along to the Community Room 2-4pm

Cost £1.50. For further details, contact Jean Tallis on 882394 or jean.tallis@gmail.com



MIDGLEY BREAKFAST CAFE

in the Community Room Saturdays 10am to 1pm 13th November

11th December - Extra Festive Treats available. Take Away if required.

Come and enjoy a freshly made bacon, egg or/and sausage teacake and a cafetiére of coffee or a pot of tea, in the village.



If you are planning to join in social events in the village, please come only if you are feeling well and not experiencing any cold-like symptoms. Thank you

MIDGLEY COMMUNITY SHOP

Although it is still very early, the eagle eyed amongst you will have noticed some Christmas goodies already in the shop. The ever popular truffles have already been selling well and more seasonal treats will arrive as we get closer to December.



Wine As in the last few years, we will be creating a long list and order form for wines especially for Christmas. Please take a good look at the list and you will definitely find wines to drink and wines to give as presents.

Stand Pies from our usual suppliers can be ordered in a variety of sizes.

Similarly there will be information about ordering meat and veg from the shop nearer the time.



The popular **Luddenden Calendar** is on sale.



We stock cards, wrapping paper, and also sellotape and batteries for any last minute panics, and plenty of stamps for all your cards.

HAPPY VALLEY DECORATING

established 2005 based in Midgley **MARTIN OVEREND** 07799 897745 Professional: Affordable: Reliable

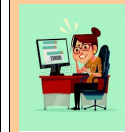


Midgley School Farmers' Market Christmas Fair

Friday 10th December 2.30-6pm

If you would like to have a stall, they are available at £15 each.

Please contact the school on 01422 882356 to enquire or email admin@midgley.calderdale.sch.uk



For news items or advertisements to be included in the next newsletter please

contact Sandra 883388 or email sandyscott21@ymail.com



MIDGLEY AT CHRISTMAS – Advent Windows

Following the success of last year's Advent Windows, we are hoping once again to turn Midgley into a living Advent Calendar in the run-up to Christmas, with windows throughout the village decorated and 'opened' one by one each evening between December 1st and Christmas Eve.

We would love to hear from you if you would like to take part.

You need to live in a house that has a window that can clearly be seen from the road or a footpath, without people coming on to your property. You can decorate the window however you choose, and you'll need to keep it illuminated each evening after it is 'opened' until after Christmas.

Each window is numbered and there will be a simple map that people can follow around the village to view the windows as they are opened.

Last year's Advent Windows really brought light and life to the village during the dark December 'lock down' – there are images to remind you on the village instagram account Eh Up Midgley. If you're interested in taking part (and thanks to those who have already volunteered) please get in touch

BEFORE FRIDAY 19TH NOVEMBER

Of course we need 24 windows to make this work, so we would be really grateful for as much support as possible.

Please contact Anne Holdsworth 07985 128737 stocksfarm55@gmail.com

We'll need your name and address, mobile no. email and any preference you have about dates.



MAKE A CHRISTMAS WREATH

Get in the mood for Christmas and make a decoration for your door.

Wednesday 1st December 6.30 – 8.30 at Midgley School.

Cost £15 to include seasonal drinks and treats.

Buy your tickets to book a place, either in Midgley Shop or through the school.

Please bring your own little decorations to go on your wreath.

Base rings of Dogwood (or willow), greenery, wire and cutting tools will be provided, but please bring your own, if you have some, then there's more to go around.

Don't worry if you haven't done it before, tuition will be given and it's quick and easy to learn.



VILLAGE CHRISTMAS CAROL SINGING -

A LOVELY START TO CHRISTMAS

Our traditional carol singing around the village will be on

Sunday 19th December at 5.45pm

We have contacted Santa and he is available to drop by and deliver presents to all of our residents who are over 80 years old or are housebound.

If you know someone who you think qualifies and hasn't previously, please let Rema know on 01422 885111.

